

CAREERS

ABOUT

SUBMIT YOUR STORY

SUBSCRIBE



Rethinking
The Future

RTF AWARDS 24 ▼

ARTICLES ▼

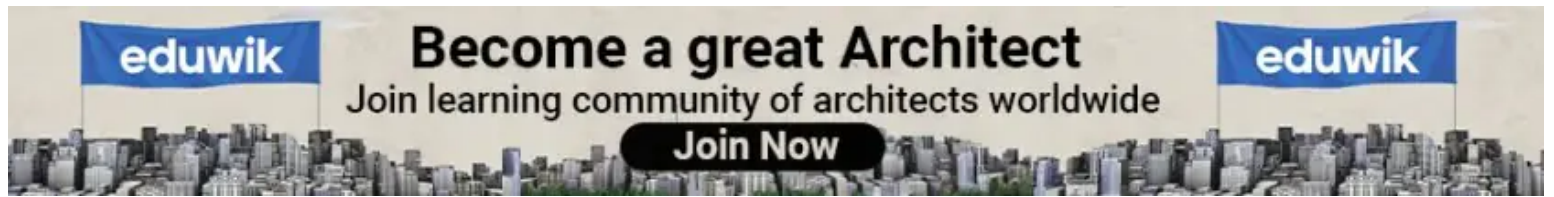
COURSES

FUTURE T

Start Chatti

An Expert Will Answ

JustAnswer



INTERIOR DESIGN

How to Create the Perfect Festive Corner Retreat A Blend of Warmth, Decor, and Celebration

7 MINS READ



Looking to create the ultimate festive corner in your home? Here are some expert style tips and creative corner designs to inspire you this season. From cozy, intimate nooks with soft throws and twinkling lights to vibrant setups brimming with seasonal accents, there's a corner style for every home.

Project Name: How to Create the Perfect Festive Corner Retreat A Blend of Warmth, Decor, and Celebration



©How to Create the Perfect Festive Corner Retreat A Blend of Warmth, Decor, and Celebration

Whether you're going for an earthy, minimalist vibe or an opulent, color-rich display, expert recommendations will help you craft a warm and inviting space that reflects the festive spirit.

Festive corner styling relies on several key factors, starting with the overall interior aesthetic you're aiming to achieve. Whether you prefer a minimalist, bohemian, or traditional look, your furniture and accessories should complement that style. Choose decor pieces like vases, lanterns, or sculptures that reflect the mood of your space. F

and festive decorations should align with the color palette and theme, creating a cohesive and harmonious look. Soft throws and cushions add warmth and comfort, giving the corner a cozy, inviting feel. With thoughtful selection, you can transform any corner into a festive retreat that exudes charm and elegance – Amruth Sampige, Co-founder, Dash Square.



©How to Create the Perfect Festive Corner Retreat A Blend of Warmth, Decor, and Celebration

“To create the perfect festive corner retreat, blend traditional elements with cozy elegance by focusing on key décor aspects. Start with a statement piece of artwork that reflects cultural significance, as seen in the featured mural, adding depth and festivity. Layer patterned fabrics like floral upholstery, complementing them with vibrant cushions to enhance warmth. Incorporate a statement chandelier with soft lighting from lamps, v

adding natural elements like indoor plants to breathe life into the space. Accessorize with artisanal objects, such as colorful vases or brassware, and ground the room with a traditional rug. Lastly, ensure comfortable seating that invites relaxation and celebration, making the corner both stylish and welcoming.” – Sachin Gupta & Neha Gupta, Founders & Interior Designers, Beyond Designs.

“The dining space exudes luxury and elegance through its thoughtfully curated décor elements. The standout feature is the fluid, sculptural crystal chandelier, which adds depth and sophistication while serving as a striking focal point. The golden floral wall sculpture brings texture and warmth, contrasting beautifully with the sleek neutral-toned walls. The curvaceous seating with gold detailing complements the space, creating a harmonious balance of modern opulence. The marble flooring enhances the room’s luxurious feel, while dark wood accents in the table and console add depth without overwhelming the soft, metallic palette. Every element, from the chandelier to the wall décor, contributes to a celebratory and regal atmosphere, perfect for festive gatherings.”- Rishabh Kapoor & Monica Chadha, Founders & Interior Designers, Design Deconstruct.

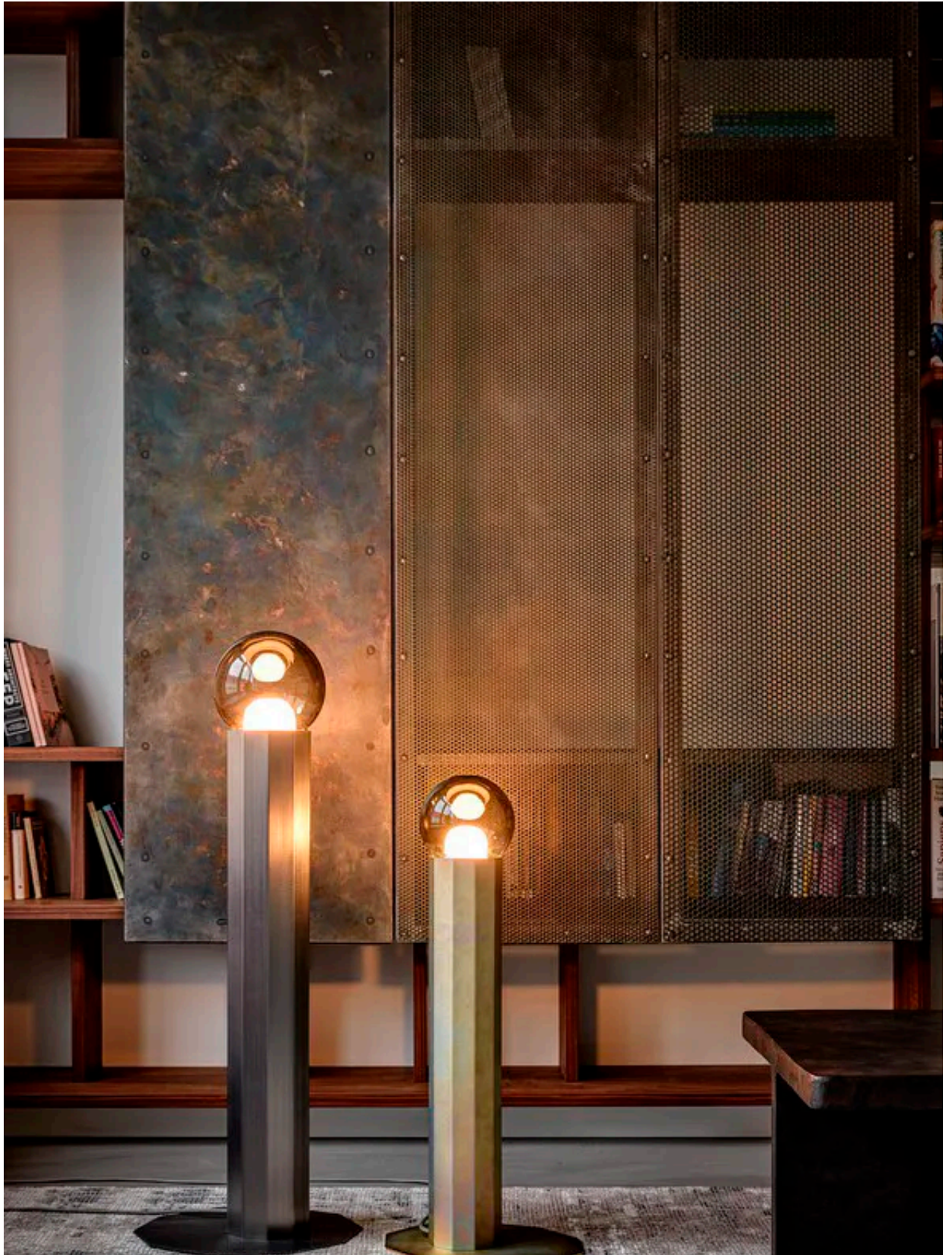




©How to Create the Perfect Festive Corner Retreat A Blend of Warmth, Decor, and Celebration

Festive styling isn't confined to indoor corners—it extends to every corner of your home, including outdoor spaces, which can feel challenging. To create a cozy yet charming atmosphere outdoors, start by designing a seating area. A relaxed armchair paired with a rug adds comfort, while a small corner table holds essentials like your coffee cup, making the space practical. Scented candles enhance the ambiance with a pleasant fragrance, and a few minimal accessories to the table to complete the look. This setup transforms your outdoor area into a welcoming, functional space perfect for enjoying festive moments.

Saba Kapoor, Co-founder; Nivasa.





©How to Create the Perfect Festive Corner Retreat A Blend of Warmth, Decor, and Celebration

I believe lighting plays a crucial role in styling any space, and proper lighting is essential in different areas. The color and style of lighting should be carefully selected to complement the space, as it can significantly impact the overall ambiance. Both insufficient and excessive lighting can negatively affect the atmosphere, so finding the right balance is key. For a cozy and inviting look, yellow lighting with a color temperature around 3000K is ideal, as it adds warmth and comfort to the environment. Thoughtfully styled lighting can truly transform the feel of any space. – Aryaman Jain Innovative Design Studio by IDG.



vivo V40e

Portrait So Pro



With the festive season approaching, it's time to invite guests and friends for relaxed gatherings, and table styling plays a crucial role in setting the right mood. Styling should reflect the color, style, and overall look of your space. The color of the food, napkins, candles all contribute to the table's aesthetic, each playing an important part in the overall presentation. Carefully choosing and arranging items on the table is key to achieving a harmonious look. Even a table filled with decor can feel perfect if styled thoughtfully, as unarranged items can create a cluttered vibe. Mastering table styling is essential this festive season!- Pratyusha Reddy, Dhatri Dabara, Co-founders, Studio Dvara.

Dining plays a crucial role in festive celebrations, where the arrangement and presentation of the table significantly enhance the experience. The number and placement of items

such as plates, glasses, and utensils, create an organized and inviting atmosphere. Color schemes, from tablecloths to napkins, contribute to the overall aesthetic, setting the stage for the event. Stylish food presentation not only makes dishes more appetizing but also adds a touch of elegance. The choice of drinkware and the careful arrangement of drinks complement the meal, elevating the dining experience. Together, these elements transform a simple meal into a memorable celebration.



©How to Create the Perfect Festive Corner Retreat A Blend of Warmth, Decor, and Celebration

“This elegant dining and living space is the perfect setting for a festive corner. The rich, luxurious palette of cream and beige, combined with the soft glow of the chandelier, creates a warm, inviting ambiance. To enhance the festive vibe, focus on the dining table with a centerpiece, decorating it with candles, floral arrangements, and delicate tableware.

Incorporate touches of metallics, such as silver and gold, to add a sophisticated shine plush seating and carefully arranged elements make this a cozy yet opulent area, ideal for intimate festive dinners and gatherings with loved ones.” – Ajay Arya, Founder and Interior Designer, A Square Designs



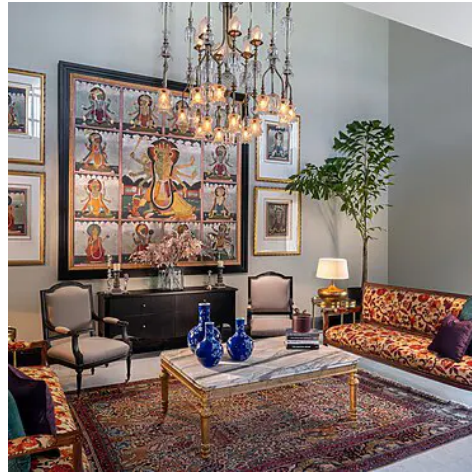
©How to Create the Perfect Festive Corner Retreat A Blend of Warmth, Decor, and Celebration

“This exquisite dining space radiates sophistication, making it an ideal setting for festive celebrations. The opulent combination of deep red velvet chairs and intricately carved wooden furniture evokes a sense of timeless grandeur. To transform this space into a festive haven, introduce refined touches such as fresh, seasonal blooms arranged in elegant crystal vases, harmonizing with the room’s floral wallpaper. The gilded pendant light, paired with the large, arched mirror, casts a soft, golden glow, enhancing the room’s festive atmosphere.”

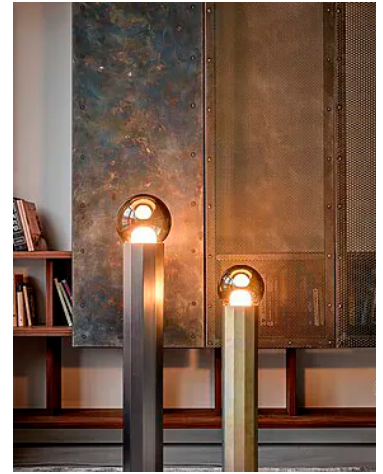
festive ambiance. The table's appeal creates a lavish and welcoming environment for elegant festive gatherings. This space exudes a refined charm, perfect for intimate celebrations filled with warmth and elegance." – Meera Pyarelal, Founder and Creative Director, Temple Town



©How to Create the Perfect Festive Corner Retreat A Blend of Warmth, Decor, and Celebration



©How to Create the Perfect Festive Corner Retreat A Blend of Warmth, Decor, and Celebration



©How to Create the Perfect Festive Corner Retreat A Blend of Warmth, Decor, and Celebration



©How to Create the Perfect Festive Corner Retreat A Blend of Warmth, Decor, and Celebration



©How to Create the Perfect Festive Corner Retreat A Blend of Warmth, Decor, and Celebration



©How to Create the Perfect Festive Corner Retreat A Blend of Warmth, Decor, and Celebration