

JANUARY - FEBRUARY 2025 ₹100

A Times Group Publication

FEMINA

*Be
unstoppable*



THE
REIGN
OF

RASHMIKA



PHOTOGRAPH: ESSENTIA ENVIRONMENTS

10. Let There Be Light

Harness Light To Best Effect

Create ambiance with layered lighting. Combine ambient light with statement pendants or table lamps to achieve a warm and inviting glow.

– **Hardesh Chawla and Monica Chawla**

Layer light through the use of various lighting elements to elevate your experience. Combine ambient lighting with accent lighting to highlight the beauty of your home. Opt for sculptural pendants, wall sconces, and floor lamps to serve as decorative pieces.

– **Aryaman Jain**

Enhance your space with sculptural luxury lighting. Chandeliers with gold, brass or wooden accents can create a striking visual effect, bringing energy and movement to your interiors. These lighting choices add a sophisticated edge to dynamic, modern spaces.

– **Natasha Jain**

Work With Indirect Lighting

Indirect lighting is a subtle yet effective way to highlight your decor. It allows for soft illumination that calls attention to key decorative elements. This type of lighting gently washes walls or ceilings, creating a sense of depth and refinement while enhancing the glow of your space.

– **Aryaman Jain**

Don't Underestimate Portable Lamps

Portable lamps bring versatility to your decor. Whether you're illuminating a cosy corner indoors or adding a glowing accent to an outdoor gathering, portable lamps provide flexibility while maintaining a chic, modern aesthetic. Seamlessly blend function with festivity, allowing you to easily move and adapt lighting to suit your mood and space.

– **Aryaman Jain**

Master The Art Of Outdoor Lighting And Façade Illumination

Architectural uplighting can be used to highlight textures on the façade, while soft landscape lighting enhances garden features. **F**

– **Aryaman Jain**



PHOTOGRAPH: INNOVATIVE DESIGN STUDIO BY IDG

9. Choose To Be Sustainable

Opt for eco-friendly furniture, decor, and materials that prioritise durability and environmental consciousness, making your home both stylish and planet-friendly.

– **Saba Kapoor**

Incorporate eco-friendly elements such as upcycled furniture, reclaimed wood, and natural fabrics, paired with handmade accents for an artisanal touch.

– **Pratyusha Reddy and Dhatri Dabbara**

6. Add Personal Touches

Reflect your unique style with custom furniture, bespoke wall art, or tailored seating. Opt for clean-lined consoles and shelving units in natural wood finishes to achieve a curated, opulent look that exudes timeless sophistication.

– *Natasha Jain*



7. Embrace The Aesthetic Of Minimalism

Start with a neutral base palette of whites, beiges or soft greys, and add vibrancy through bold accent furniture pieces with unique designs that make a statement without overwhelming the space.

– *Saba Kapoor*

Embrace a minimal design space by decluttering and curating sleek, functional furniture with clean lines, creating a calming, modern aesthetic that feels effortlessly elegant.

– *Pratyusha Reddy and Dhatri Dabbara*

PHOTOGRAPH: DESIGN STUDIO BY IDG

8. Work With Wallpaper

Use contemporary wallpapers with bold patterns, geometric designs, or subtle textures to create a focal point in any room. >

– *Saba Kapoor*

PHOTOGRAPH: NIVASA



PHOTOGRAPH: NIVASA

4. Infuse Your Home With Nature

Indoor plants, stone planters, or preserved floral arrangements add vibrancy and a sense of harmony.

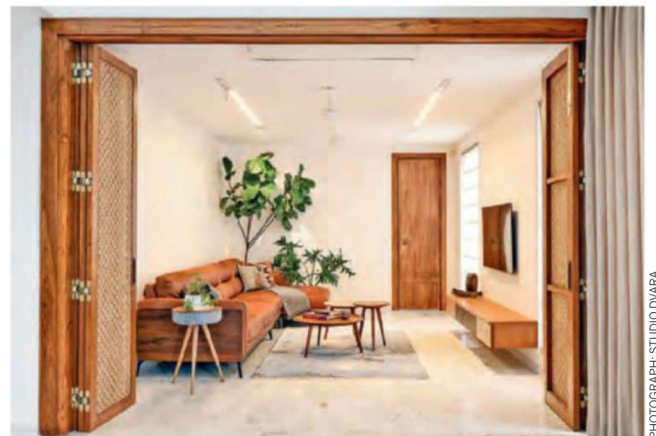
– **Hardesh Chawla and Monica Chawla**

Bring nature indoors by incorporating greenery, natural materials such as wood, and organic shapes to create a calming, wellness-focused environment.

– **Saba Kapoor**

Use biophilic design to nature home, adding indoor plants, vertical gardens, and maximising natural light to create a serene connection to the outdoors.

– **Pratyusha Reddy and Dhatri Dabbara**



PHOTOGRAPH: STUDIO DIVARA

5. Bring In Warmth Through Natural Wood

Introduce neutral wood elements to infuse warmth and character into your interiors. Invest in sleek, modern wooden furniture such as live-edge coffee tables, sculptural chairs, or minimalist bed frames for a refined, high-end look. Pair wood with 'noble' materials such as marble or brass for a layered and sophisticated aesthetic.

– **Natasha Jain**



PHOTOGRAPH: NATELIER BY BENT CHAIR

2. Layer Textures

Elevate your interiors with layered soft furnishings. Add tactile throws, textured cushions, and overlapping rugs for depth and warmth. A subtle pop of colour within these layers can add an uplifting, chic edge.

– **Hardesh Chawla and Monica Chawla**

Add depth and warmth by layering textures through rugs, cushions, throws, and upholstery in contrasting materials such as velvet, linen or wool.

– **Saba Kapoor**

Embrace textured layering to add depth – think layered rugs, plush throws, and cushions in contrasting materials such as velvet and jute for a cosy, sophisticated vibe.

– **Pratyusha Reddy and Dhatri Dabbara**



PHOTOGRAPH: NATELIER BY BENT CHAIR

3. Opt For Furniture That Doubles As Art

Choose clean-lined designs with sculptural elements, such as statement chairs or artistic console tables, to bring character to any room. >

– **Hardesh Chawla and Monica Chawla**

OUR EXPERTS



HARDESH CHAWLA AND MONICA CHAWLA
Director and Creative Head –
Essentia Environments



ARYAMAN JAIN
CEO – Innovative Design Studio



PRATYUSHA REDDY AND DHATRI DABBARA
Co-Founders and Principal
Architects – Studio Dvara



SABA KAPOOR
Co-Founder – Nivasa



NATASHA JAIN
Co-Founder – Natelier by Bent Chair

Easy Ways To Tweak Your Home For 2025

Incorporate these elements to make your home a modern retreat that radiates sophistication and luxury for 2025. Interior design experts share their tips with **Primrose Monteiro-D'Souza**



As we step into 2025, transform your living space to achieve a balance of purpose, warmth, and timeless elegance.

1. Embrace The Elegance Of Neutrality

Adopt soft, neutral tones for walls, floors and ceilings. Complement these with natural materials such as stone and wood finishes, creating a refined, understated charm that endures.

– **Hardesh Chawla and Monica Chawla**

Build a palette of soft neutrals and earthy tones, adding depth through rich textures and tone-on-tone patterns. Emphasise understated elegance with rugs, furniture, and decor pieces that radiate an artistic flair while maintaining balance and harmony.

– **Natasha Jain**

Opt for earthy tones such as terracotta, olive green, and sand beige to ground your space in warmth and timeless appeal.

– **Pratyusha Reddy and Dhatri Dabbara**